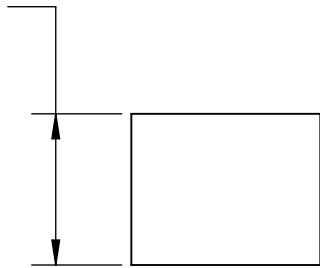


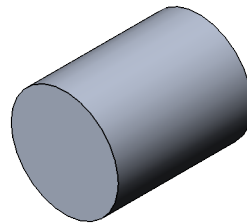
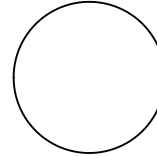
2

1

$\phi 20^{+0.2}_{-0.2}$
 $[.79^{+.01}_{-.01}]$



$25^{+0.2}_{-0.2}$
 $[.98^{+.01}_{-.01}]$



B

B

A

A

NOTE:
 1. Tensile Strength 900 kgf/sm² (12995 psi) or more.

PROPRIETARY AND CONFIDENTIAL
 THE INFORMATION CONTAINED IN THIS DRAWING IS THE SOLE PROPERTY OF ULTIMO. ANY REPRODUCTION IN PART OR AS A WHOLE WITHOUT THE WRITTEN PERMISSION OF ULTIMO IS PROHIBITED.

		DIMENSIONS ARE IN MM TOLERANCES: FRACTIONAL ± ANGULAR: MACH ± BEND ± TWO PLACE DECIMAL ± THREE PLACE DECIMAL ±		NAME DRAWN SK	DATE 07/30/2018	ULTIMO		
		MATERIAL ALUMINUM		CHECKED				Spacer for pipe size from 152 mm (3") to 254 mm (10")
NEXT ASSY	USED ON	FINISH -		ENG APPR.		SIZE A	DWG. NO. 100050 REV B	
APPLICATION		DO NOT SCALE DRAWING		MFG APPR.		SCALE:2:1	WEIGHT: 0.02 kg (0.05 lbs)	SHEET 1 OF 1
				COMMENTS:				

2

1